



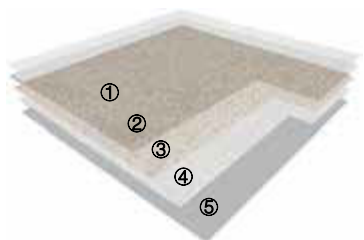
**Taralay<sup>®</sup> Emotion**

**Gerflor<sup>®</sup>**



34-43

PANAME / COUTURE / ROMA / ANGLE / TERRA / PYRAMID / WOOD



- ① Protecsol® surface treatment
- ② Transparent wear layer
- ③ Printed design
- ④ Reinforced layer
- ⑤ Compact back layer

- Protecsol® surface treatment with excellent resistance to scratching, scuffing & easy cleaning.
- Transparent wear layer with printed designing, highest durability.
- Compact backing with reinforced layer, high resistance to static and dynamic indentation under rolling loads, and excellent dimensional stability.
- No DOP, no heavy-metal, no benzene, no formaldehyde & 100% compliant with REACH, friendly to health and environment.
- Recommended for high traffic area in education, office, retail, hospital and institutional buildings.

Compact sheet, without foam backing

## LOW VOC EMISSION, GOOD INDOOR AIR QUALITY



**COMPOSITION**  
**100% REACH compliant**

- FREE of formaldehyde
- FREE of heavy metals
- FREE of solvent



### WELLNESS

- Health**
  - Antibacterial activity (inhibits growth > 99%)
- Safety**
  - Good slip resistance
- Comfort**
  - Walking comfort



**RECYCLED CONTENT**

- 20 % recycled content
- 100 % REACH compliant recycled content



**RECYCLABILITY**

- 100 % recyclable product



**INDOOR AIR QUALITY**

- TVOC emissions 10 times below standard (TVOC < 100 µg/m<sup>3</sup> after 28 days)
- Floorscore certified
- Comply with AgBB protocol
- No formaldehyde emission



**LCA**

- Eco-designed according to a product specific Life Cycle Analysis
- Manufactured in an Iso 14001
- Contribution to many Green Building Schemes (LEED, HQE, BREEAM...)



#### **INSTALLATION**

Installation should be carried out in accordance with local standards. Subfloor should be smooth, hard, clean and dry prior to laying. Where applicable the subfloor must incorporate an effective Damp Proof Membrane. The material must be allowed to acclimatize 24 hours before installation in a room temperature of between 18-24°C. All seams must be hot welded using Gerflor® matching welding rod.

#### **MAINTENANCE**

Maintenance should be carried out regularly to retain in the appearance and durability of the floor. The floorcovering should be maintained with regular sweeping and damp mopping using a neutral cleanser. More intense cleaning should be carried out using a fine spray cleaning pad under a floor machine, or for larger areas combined machine cleaning.

# Taralay® Emotion



1154 Earth Nature - Terra



1125 Sand - Roma



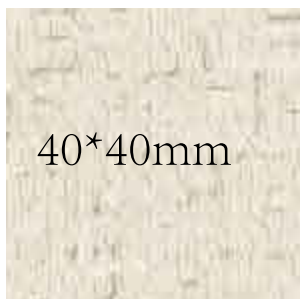
1132 Sunshine - Couture



1122 Beige - Paname



1135 Sand - Angle



1131 Alabaster - Couture



0707 Natural - Couture



1101 Cream - Roma



1140 Earth - Angle



1137 Pumice - Angle



1143 Volcano - Angle



0711 Capuccino - Couture



0801 Sable - Paname



0809 Clay - Paname



0802 Light Grey - Paname



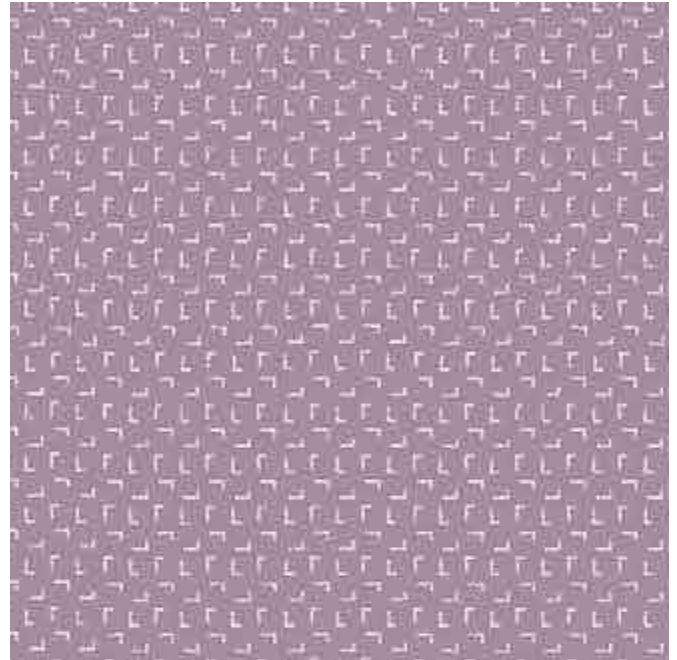
# Taralay® Emotion



1134 Maple - Angle



1127 Corn - Roma



1141 Sugilite - Angle



1142 Sunset - Angle



1120 Yellow - Couture



1126 Orange - Roma



1105 Rouge - Roma



1146 Mahogany - Angle



1144 Forest - Angle



1136 Mountain - Angle



1118 Grass - Couture

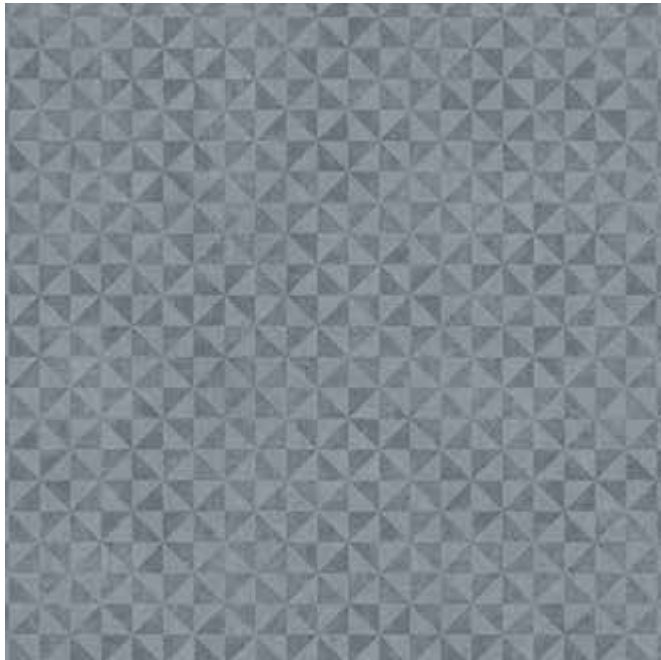


1106 Spring - Roma



1128 Emerald - Roma

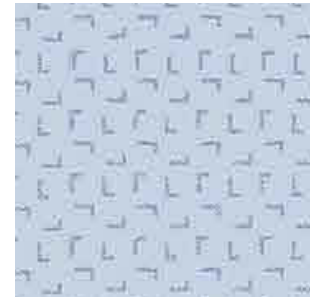
# Taralay® Emotion



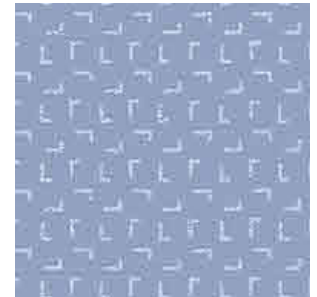
1158 Blue - Pyramid



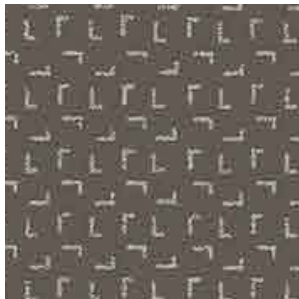
1124 Sapphire - Paname



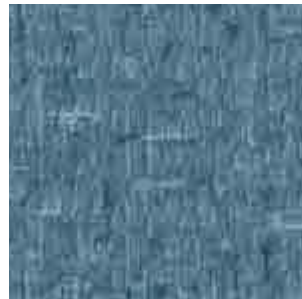
1159 Sky - Angle



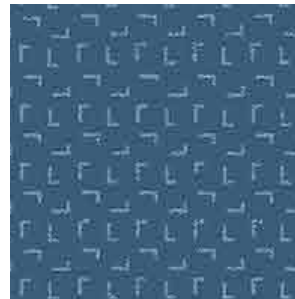
1138 Aegean - Angle



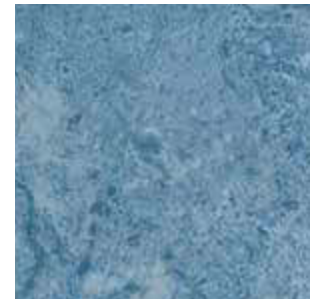
1145 Carbon - Angle



1119 Ocean - Couture



1139 Mediterranean - Angle



1111 Ciel - Roma



0806 Anthracite - Paname



1130 Sapphire - Roma



1110 Ink - Roma



1121 Black - Paname





# Taralay® Emotion



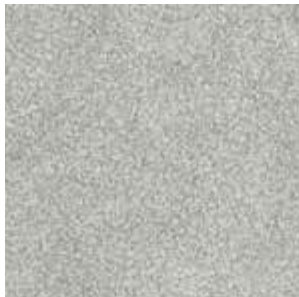
1117 Grey - Couture



1156 Beige - Pyramid



0804 Slate - Paname



0811 Calaité - Paname



1108 Painting - Roma



1155 Dark Grey - Terra



0712 Smoke - Couture



1129 Smoked - Roma



1157 Grey - Pyramid



0708 Dark - Couture



1123 Grey - Paname



# Taralay® Emotion WOOD



0504 Cream - Fontenay



1152 Beige - Muse



1147 Light Beige - Albion

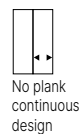




# Taralay® Emotion WOOD



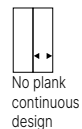
1148 Natural Yellow - Albion



1116 Golden - Arcy



1115 Buckwheat - Amboise



1003 Chamois - Arcy



0503 Honey - Fontenay

# Taralay® Emotion WOOD



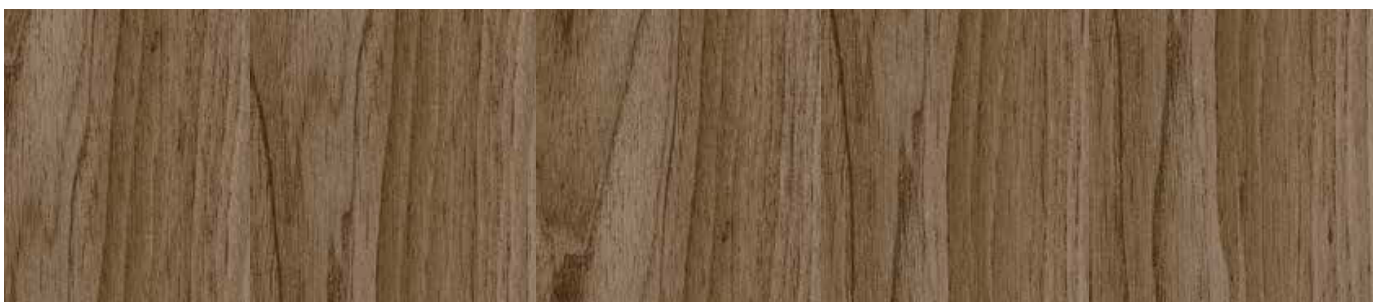
0402 Light - Chinon



1150 Mid Brown - Albion



0902 Rustic - Amboise



0505 Brown - Fontenay



# Taralay® Emotion WOOD



1149 Light Grey - Albion



0903 Beige - Amboise



1151 Deep Grey - Albion



1153 Brown Grey - Muse



1114 Dark Grey - Amboise

# Taralay® Emotion



gerflor.asia

**TARALAY® EMOTION** is a multilayered compact vinyl floor covering, available in 2m width sheet. The product comprises a printed design protected by a transparent wear layer, and the compact backing with reinforced layer resists static and dynamic perforation under rolling loads and provides excellent dimensional stability.

**TARALAY® EMOTION** is treated with ProtecSol® surface treatment with excellent resistance to scratching, scuffing & easy cleaning. It has no DOP, no heavy-metal, no benzene, no formaldehyde & 100% compliant with REACH, which is friendly to health and environment, recommended for high traffic area in education, office, retail, hospital and institutional buildings.

## Taralay® Emotion

Paname / Couture / Roma / Angle / Terra / Pyramid / Wood



### DESCRIPTION

Property	ISO 24346 (EN 428)	mm	2.0	2.6	2.0	2.6
Total thickness	ISO 24346 (EN 428)	mm	2.0	2.6	2.0	2.6
Wearlayer thickness	ISO 24340 (EN 429)	mm	0.7	0.7	0.55	0.55
Weight	ISO 23997 (EN 430)	g/m <sup>2</sup>	2800	3800	2900	4000
Width of sheet	ISO 24341 (EN 426)	cm	200	200	200	200
Length of sheet	ISO 24341 (EN 426)	lm	20	15	20	15

### CLASSIFICATION

Norm / Product specification	-	-	ISO 10582 (EN 649)	ISO 10582 (EN 649)	ISO 10582 (EN 649)	ISO 10582 (EN 649)
European classification	ISO 10874 (EN 685)	class	34-43	34-43	33-42	33-42
Fire rating	EN 13501 - 1	class	Bfl-s1	Bfl-s1	Bfl-s1	Bfl-s1
Static electrical propensity	EN 1815	kV	≤ 2	≤ 2	≤ 2	≤ 2
Slip resistance wet	DIN EN 16165	class	R9	R9	R9	R9

### PERFORMANCES

Property	ISO 10582	type	I	I	I	I
Type binder content	ISO 10582	type	I	I	I	I
Dimensional stability	ISO 23999 (EN 434)	%	≤ 0.4	≤ 0.4	≤ 0.4	≤ 0.4
Residual indentation	ISO 24343-1 (EN 433)	mm	≤ 0.1	≤ 0.1	≤ 0.1	≤ 0.1
Castor chair test	ISO 4918 (EN 425)	-	OK	OK	OK	OK
Thermal conductivity	ISO 10456 (EN 12524)	W/(m.k)	0.25	0.25	0.25	0.25
Colour fastness	ISO 105 - B02	degree	≥ 6	≥ 6	≥ 6	≥ 6
Chemical product resistance	ISO 26987 (EN 423)	-	OK	OK	OK	OK
Surface treatment	-	-	ProtecSol®	ProtecSol®	ProtecSol®	ProtecSol®
Anti-bacterial activity (E.coli - S.aureus) <sup>(1)</sup>	ISO 22196	-	> 99% inhibits growth	> 99% inhibits growth	> 99% inhibits growth	> 99% inhibits growth
Antiviral activity (human coronavirus 229E)	ISO 21702	-	99.7% after 5h	99.7% after 5h	99.7% after 5h	99.7% after 5h

### ENVIRONMENT / INDOOR AIR QUALITY

Property	ISO 16000 - 6	µg/m <sup>3</sup>	< 100	< 100	< 100	< 100
TVOC after 28 days	ISO 16000 - 6	µg/m <sup>3</sup>	< 100	< 100	< 100	< 100
Certification	-	-	Floorscore®	Floorscore®	Floorscore®	Floorscore®

### CE MARKING

CE	EN 14041	-	
----	----------	---	--

<sup>(1)</sup> The implementation of an effective cleaning regime is the most important defence against infections.

**Gerflor** Don't forget our complementary ranges!



**Be connected!**



#Gerflor

**we care / we act** Our Commitments for a Sustainable future

**CARBON FOOTPRINT\***  
-20 % kg CO<sub>2</sub> equivalent/m<sup>2</sup> between 2020 and 2025

**BIOSOURCED CONTENT\*\*\***  
10 % by2025

**RECYCLED CONTENT**  
30 % by2025

**ADHESIVE FREE\*\***  
35 % by2025

**ANNUAL VOLUME RECYCLED**  
60 000 t by2025



\* Scopes 1 and 2 defined in the GHG protocol \*\*\* % of activity with biosourced materials \*\* % of activity - adhesive free solution